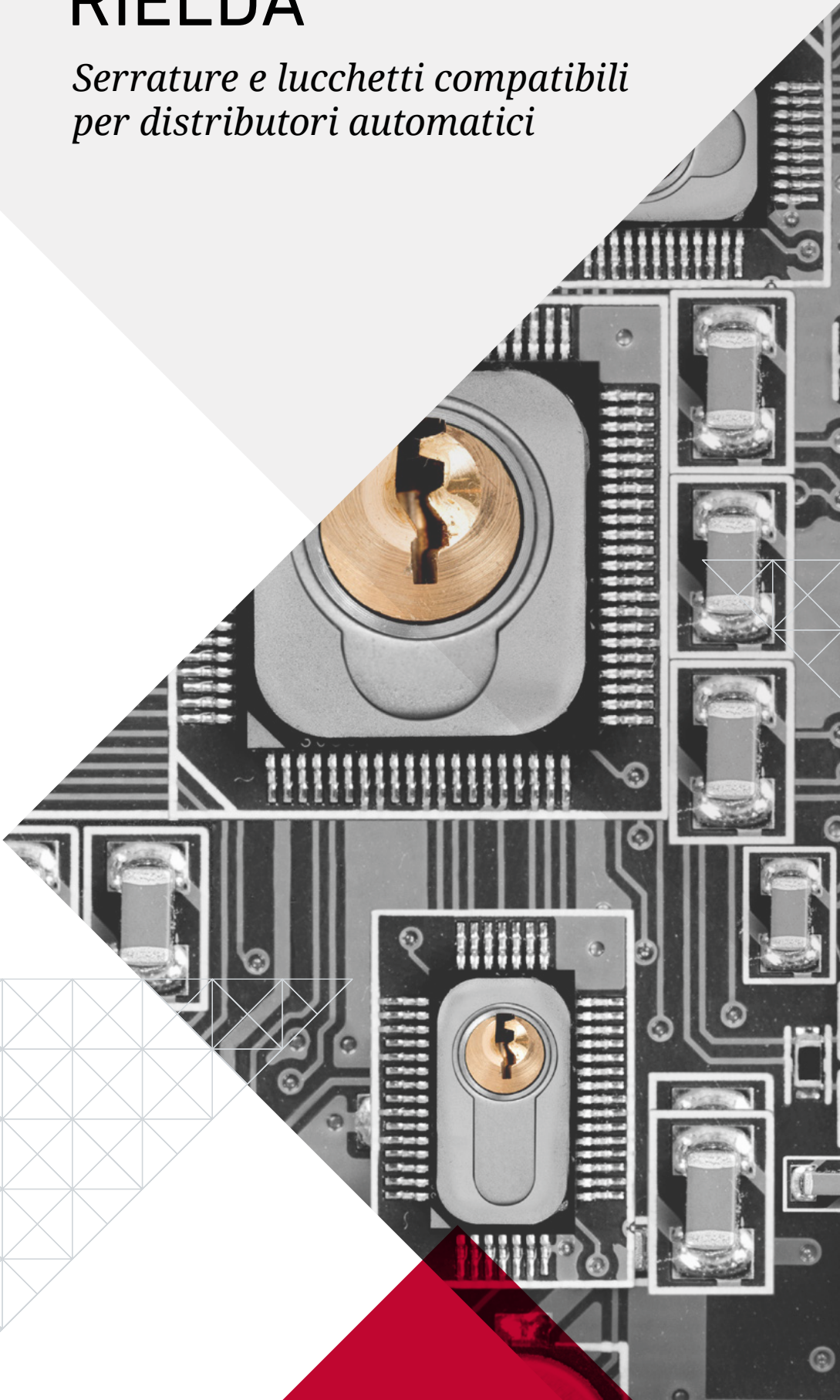


# RIELDA

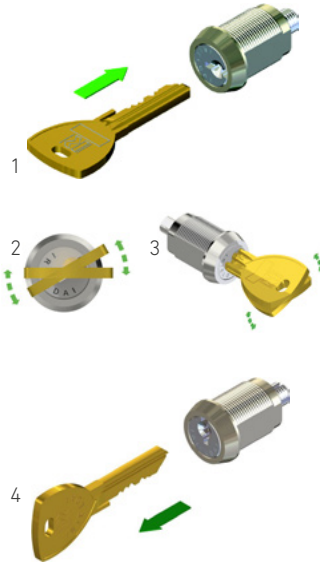
*Serrature e lucchetti compatibili  
per distributori automatici*



# ISTRUZIONI

Prima di installare la serratura e serrare i dadi assicurarsi che sia stata già programmata.  
La serratura è sicuramente programmata se si è in grado di inserire ed estrarre la chiave di uso (colore argento).

## PROGRAMMAZIONE



1. Inserire la chiave di programmazione (colore oro)
2. Oscillare più volte la chiave senza completare la rotazione (circa 30°)
3. Ruotare la chiave fino alla posizione verticale
4. Estrarre la chiave.

La serratura è programmata, riporre la chiave di programmazione (colore oro) in un luogo sicuro ed utilizzare la chiave di uso (colore argento).

## RIPROGRAMMAZIONE



1. Inserire la chiave di programmazione (colore oro)
2. Ruotare la chiave (dalla posizione verticale alla battuta)
3. Estrarre la chiave

La serratura è pronta per essere programmata con una nuova chiave.

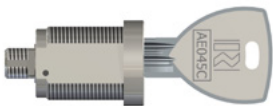
## MECCANISMI

I meccanismi di bloccaggio inseriti nel gruppo terminale della serratura devono muoversi liberamente senza trasmettere alcuna forza alla serratura.

## LUBRIFICAZIONE

Al fine di mantenere un corretto funzionamento nel tempo si consiglia di lubrificare le serrature almeno ogni 6 mesi con lubrificanti penetranti spray evitando olii pesanti in quanto intrappolano lo sporco e la polvere eventualmente presenti.

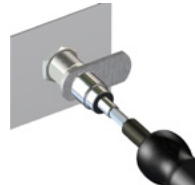
## ISTRUZIONI PER SERRAGGIO DADO CON CHIAVE DINAMOMETRICA SU SERRATURE A LEVETTA SERIE 400-500



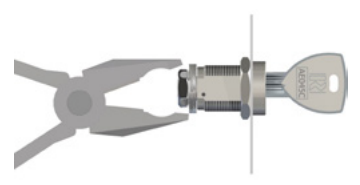
Eseguire l'installazione con chiave inserita



Inserire la levetta, la rosetta anti-svitamento e il dado



Stringere il dado con l'apposita chiave dinamometrica (1N)



Stringere le alette della rosetta anti-svitamento

## AVVERTENZA:

È vitale serrare il dado solo con l'apposita chiave dinamometrica (1N)

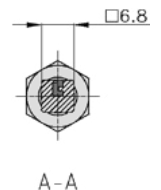
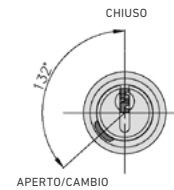
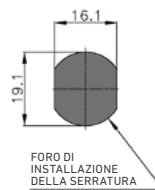
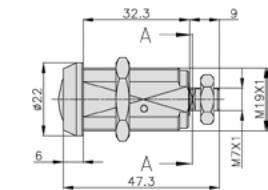
Il serraggio del dado con pinze, chiavi, pappagalli e qualsiasi altro genere di attrezzi, può comportare l'immediato blocco della serratura, o il blocco dopo un periodo di utilizzo.

## SERRATURE A LEVETTA SERIE 400-500

- serratura meccanicamente ri-programmabile
- realizzata in ottone
- finitura esterna in nichel
- resistente ad apertura con metodo "bumping"
- resistente ad apertura con grimaldelli - "picking"
- resistente alla foratura



Codice ATEL: 41029626

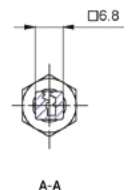
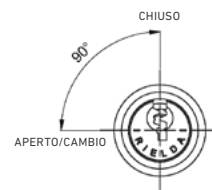
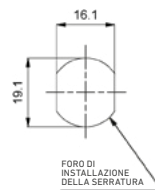
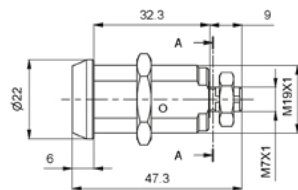


### MODELLO 407

BIANCHI 41029626



Codice ATEL: 41029626RS1

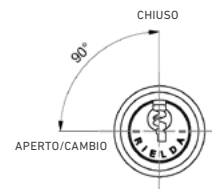
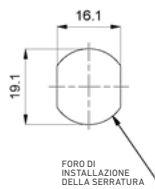
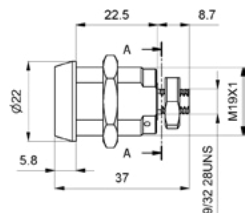


### MODELLO 407 RS1

BIANCHI 41029626



Codice ATEL: 21VE001

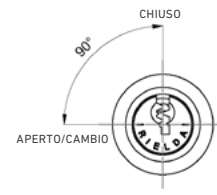
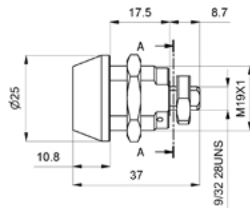


### MODELLO 410 RS1

# SERIE 400-500



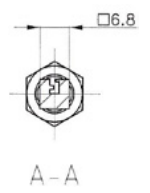
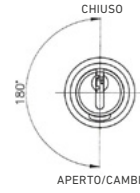
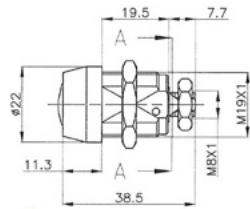
Codice ATEL: 21VE018



## MODELLO 426 RS1



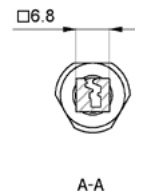
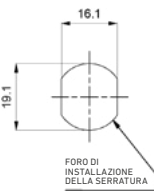
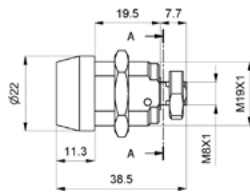
Codice ATEL: 22DU001



## MODELLO 430



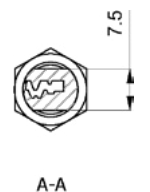
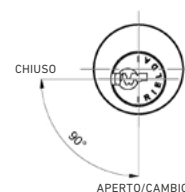
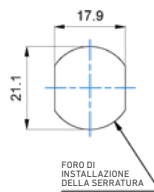
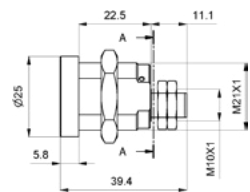
Codice ATEL: 22DU002



## MODELLO 430 RS1



Codice ATEL: 3160064026



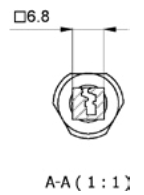
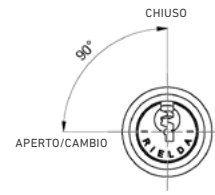
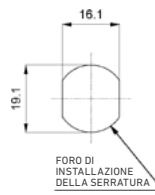
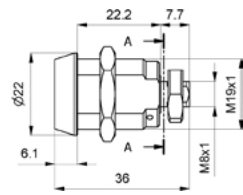
## MODELLO 463D RS1

SIELAFF 316.00.640.26

# SERIE 400-500



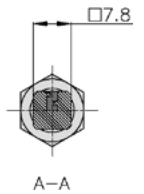
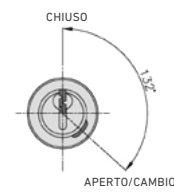
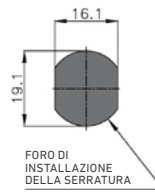
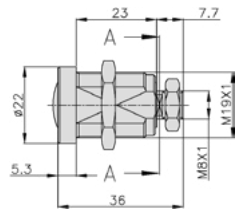
Codice ATEL: 21VE014



## MODELLO 439 RS1



Codice ATEL: 099905

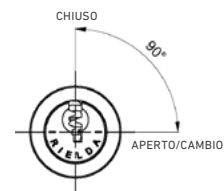
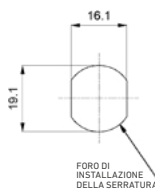
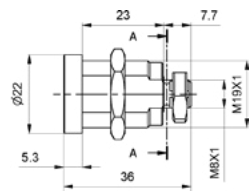


## MODELLO 503

BIANCHI 43151876, NECTA 099905



Codice ATEL: 258883



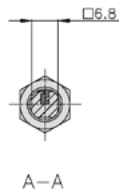
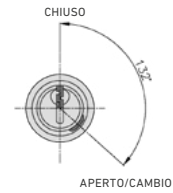
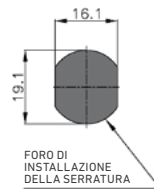
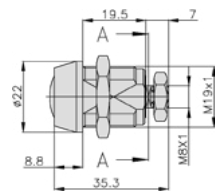
## MODELLO 503 RS1

NECTA 258883

# SERIE 400-500



Codice ATEL: 21VE009

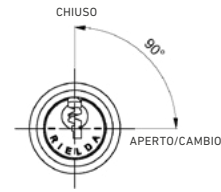
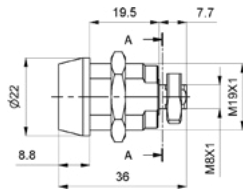


## MODELLO 510

BIANCHI 43018026



Codice ATEL: 0SER0000023

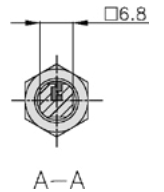
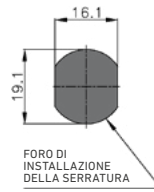
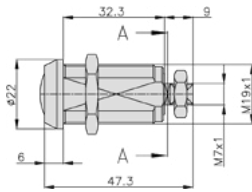


## MODELLO 510 RS1

RHEAVENDORS SER0000023



Codice ATEL: 41029616

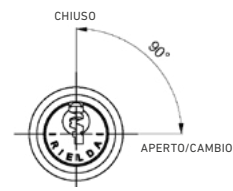
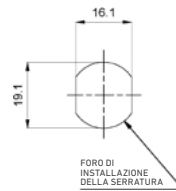
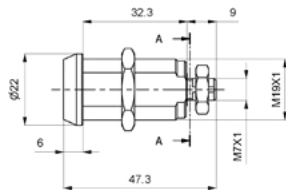


## MODELLO 511

BIANCHI 41029616, FAS 210249



Codice ATEL: 21VE011



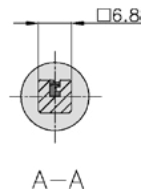
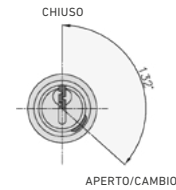
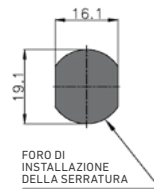
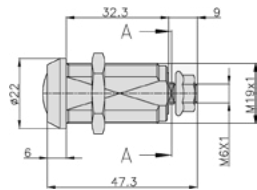
## MODELLO 511 RS1

FAS 210363

# SERIE 400-500



Codice ATEL: 0NV02229

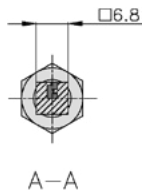
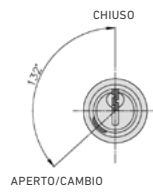
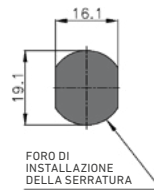
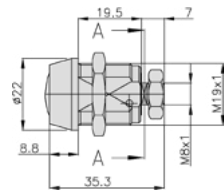


## MODELLO 512

SAECO NV02.229, 12002251



Codice ATEL: 210240

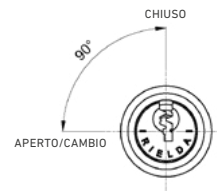
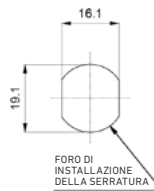
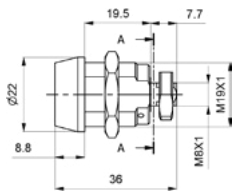


## MODELLO 515

FAS 210240



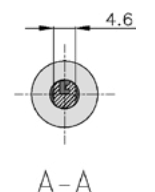
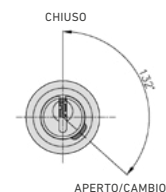
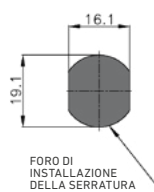
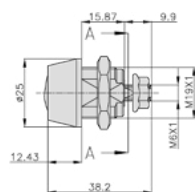
Codice ATEL: 21VE024



## MODELLO 515 RS1



Codice ATEL: 0U0000125511



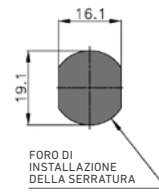
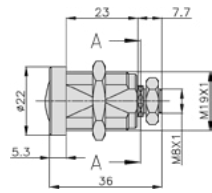
## MODELLO 524

BIANCHI 43000156, UNICUM U0000125511

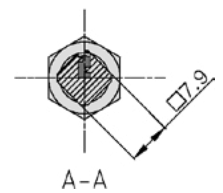
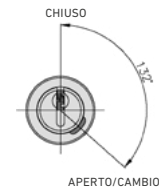
# SERIE 400-500



Codice ATEL: 21VE010



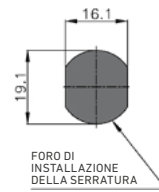
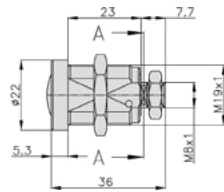
FORO DI INSTALLAZIONE DELLA SERRATURA



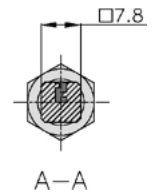
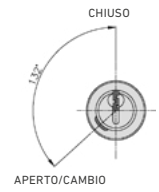
## MODELLO 525



Codice ATEL: 0V1156



FORO DI INSTALLAZIONE DELLA SERRATURA

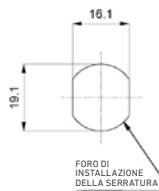
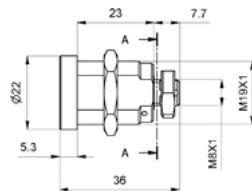


## MODELLO 536

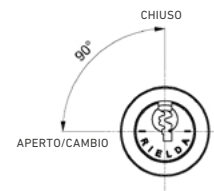
NECTA 0V1156



Codice ATEL: 258884



FORO DI INSTALLAZIONE DELLA SERRATURA

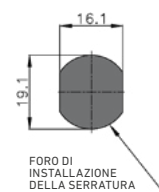
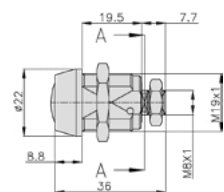


## MODELLO 536 RS1

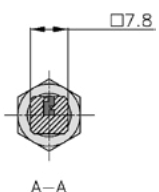
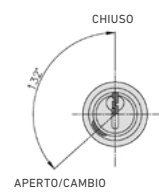
NECTA 258884



Codice ATEL: 21058936



FORO DI INSTALLAZIONE DELLA SERRATURA



## MODELLO 538

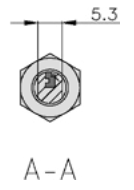
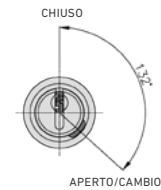
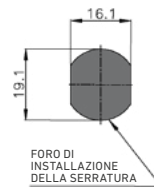
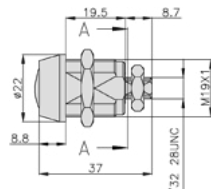
BIANCHI 21058936



# SERIE 400-500



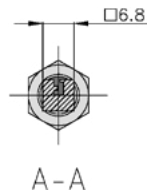
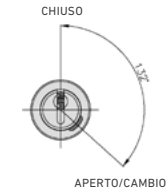
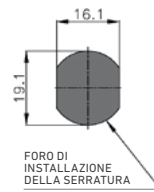
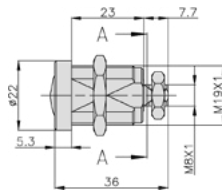
Codice ATEL: 0U0000136118



## MODELLO 549



Codice ATEL: 11003480

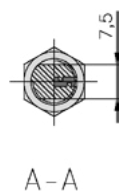
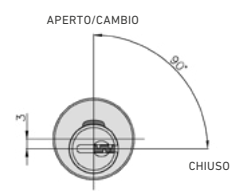
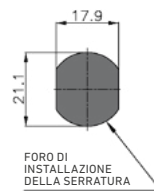
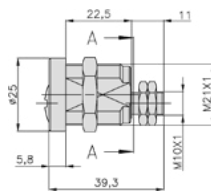


## MODELLO 557

SAECO 11003480



Codice ATEL: 21VE031



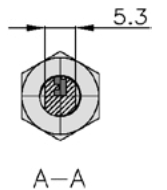
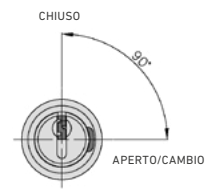
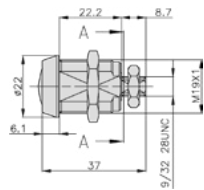
## MODELLO 561D

BIANCHI 43000456

# SERIE 400-500



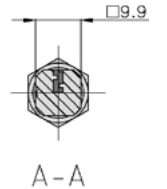
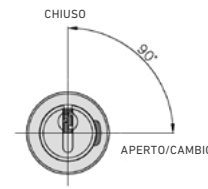
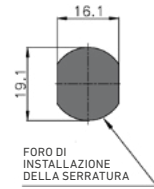
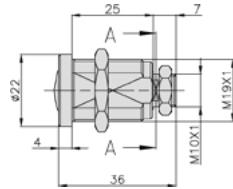
Codice ATEL: 21VE025



## MODELLO 567



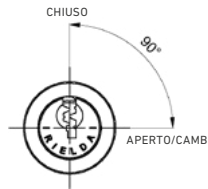
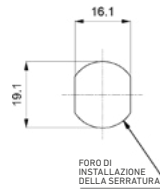
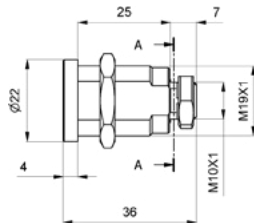
Codice ATEL: 21VE026



## MODELLO 580



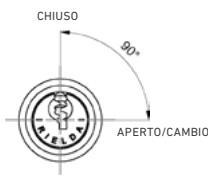
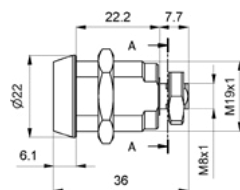
Codice ATEL: 21VE016



## MODELLO 580 RS1



Codice ATEL: 21VE013



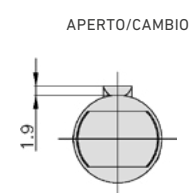
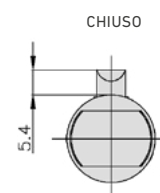
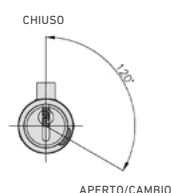
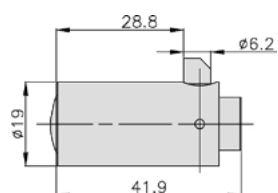
## MODELLO 583 RS1

## SERRATURE PER MANIGLIE A "T" SERIE 4000 RS1

- cilindro di sicurezza meccanicamente ri-programmabile
- realizzata in ottone
- finitura esterna in nichel
- scrocco di chiusura a molla
- scrocco di chiusura in ottone
- resistente ad apertura con metodo "bumping"
- resistente ad apertura con grimaldelli - "picking"
- resistente alla foratura



Codice ATEL: 987352

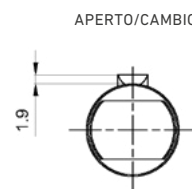
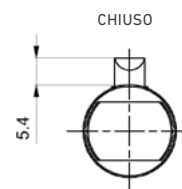
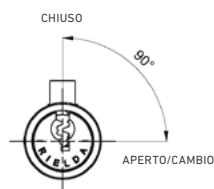
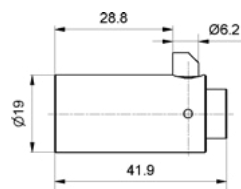


### MODELLO 4000

BIANCHI 21015516, NECTA 987352



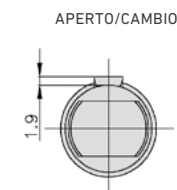
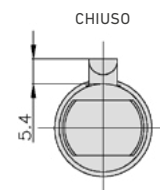
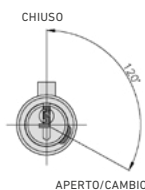
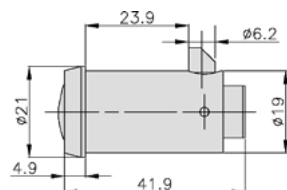
Codice ATEL: 21VE012



### MODELLO 4000 RS1



Codice ATEL: 21VE028



### MODELLO 4012

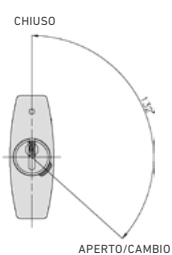
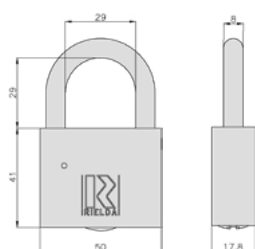
# LUCCHETTI AD ARCO

## LUCCHETTI AD ARCO

- lucchetto meccanicamente Ri-Programmabile
- finitura esterna in nichel
- resistente ad apertura con metodo ""bumping""
- resistente ad apertura con grimaldelli - "picking"
- resistente alla foratura



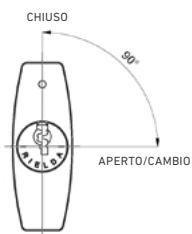
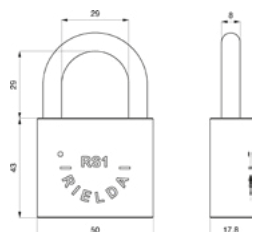
Codice ATEL: 21VE036



### MODELLO 900-50/29



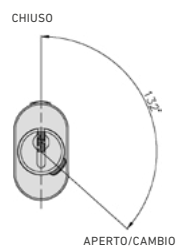
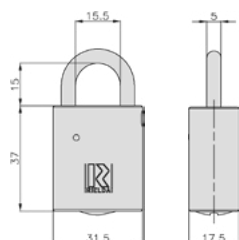
Codice ATEL: 21VE015



### MODELLO 900-50/29 RS1



Codice ATEL: 21VE007

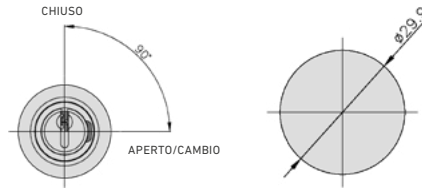
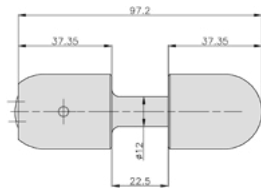


### MODELLO 900-31.5/15

# LUCCHETTI BLINDATI SERIE 800

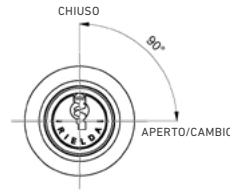
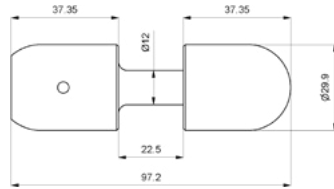
## LUCCHETTI BLINDATI SERIE 800

- lucchetto meccanicamente Ri-Programmabile
- realizzato in acciaio temprato
- finitura esterna in nichelatura chimica
- tornello di protezione antiforatura
- resistente ad apertura con metodo "bumping"
- resistente ad apertura con grimaldelli - "picking"



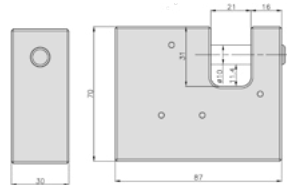
Codice ATEL: 21VE029

### MODELLO 800-30 HS



Codice ATEL: 21VE019

### MODELLO 800-30 RS1



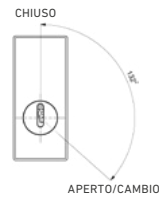
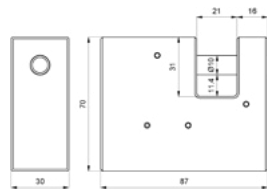
Codice ATEL: 21VE037

### MODELLO 801-87 HS

# LUCCHETTI BLINDATI SERIE 800



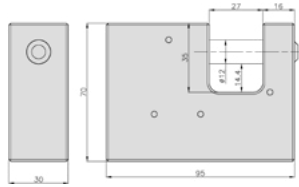
Codice ATEL: 21VE038



## MODELLO 801-87 RS1



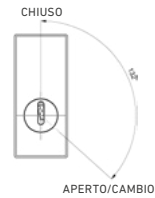
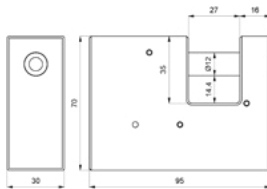
Codice ATEL: 21VE027



## MODELLO 801-95 HS



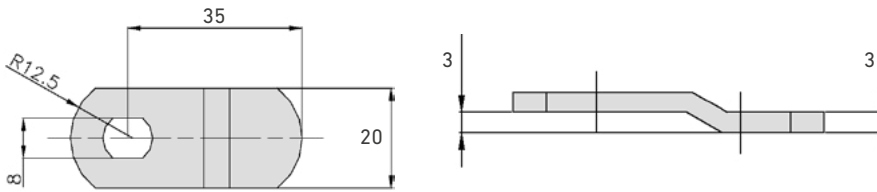
Codice ATEL: 49BQ136



## MODELLO 801-95 RS1

# LEVETTE DUE FACCE A 8 MM

## LEVETTE DUE FACCE A 8 MM



Codice ATEL: 21VE017

## MODELLO 306



**GEV Großküchen-Ersatzteil-Vertrieb GmbH**

Gadastr. 4  
85232 Bergkirchen - Germany  
T +49 8142 6522-50  
info.ger@repagroup.com  
www.gev-online.com

**LF S.p.A. a socio unico**

Via Voltri 80  
47522 Cesena FC - Italy  
T +39 0547 341111  
info.it@repagroup.com  
www.lfspareparts724.com

**EPGC S.a.s.**

13 Rue des Forts  
59960 Neuville en Ferrain - France  
T +33 3 20250621  
france@repagroup.com  
www.epgc.com

**Commercial Catering Spares Ltd.**

Block C - Axis Point Hill Top Road  
Heywood - Lancashire - OL10 2RQ - UK  
T +44 1706 621 155  
info@ccspares.co.uk  
www.ccspares.co.uk

**Atel S.r.l. a socio unico**

Via Selvuzzis 51/2  
33100 Udine UD - Italy  
T +39 0432 602095  
info@atelitalia.com  
www.atelitalia.com